

Appendix IV

Paint samples of *Five-part Ceiling Decoration for the Great Hall of Soestdijk Palace*

SEM/EDX executed at the Cultural Heritage Agency of the Netherlands, Ministry of Education, Culture and Science by Matthijs de Keijzer with a JSM 5910 Low Vacuum Device by JEOL with a detector by Thermonoran, vantage system.

Sample 1207-12

Layer 2: black blue paint layer, overall:	Pb	<i>lead white, organic black</i>
Layer 4: transparent violet red paint layer, overall:	Al Pb K	<i>organic violet red on alum</i>

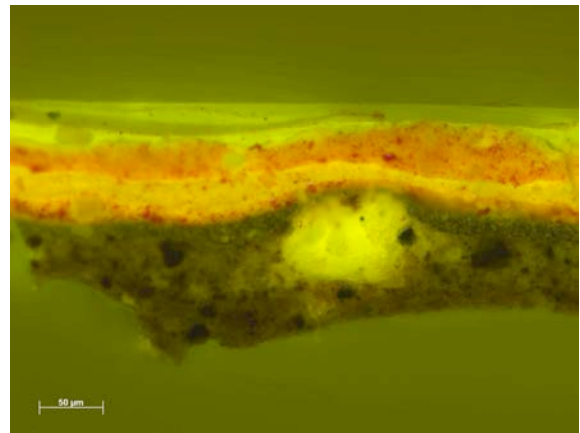
Matthijs de Keijzer
February 2006

Five-part Ceiling Decoration for the Great Hall of Soestdijk Palace

Paint cross-section 1207-12 Dark red garment



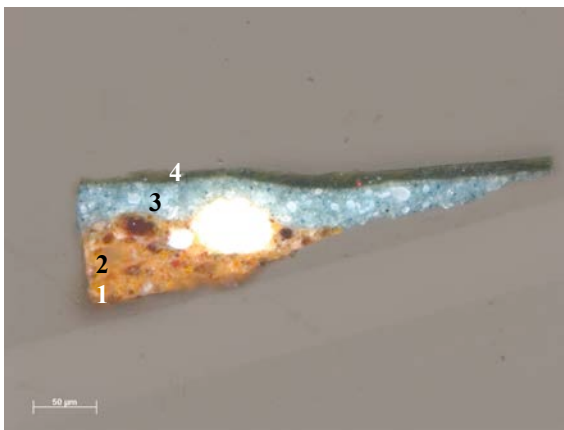
BF 500x



UV 500x

- 7 Layer of vermilion.
- 6 Layer of red lake with vermilion with on top a medium layer.
- 5 Transparent purple red paint layer of a purple red lake with on top a medium layer.
- 4 Black blue layer of the balustrade with lead white and black pigment.
- 3 Layer with a green copper pigment (probably Atacamite) mixed with lead white.
- 2 Light brown ground layer with umber, leadmenie and lead white.
- 1 Dark brown ground layer with umber.

Paint cross-section 1207-15 Dark green of woman with lance



BF 200x

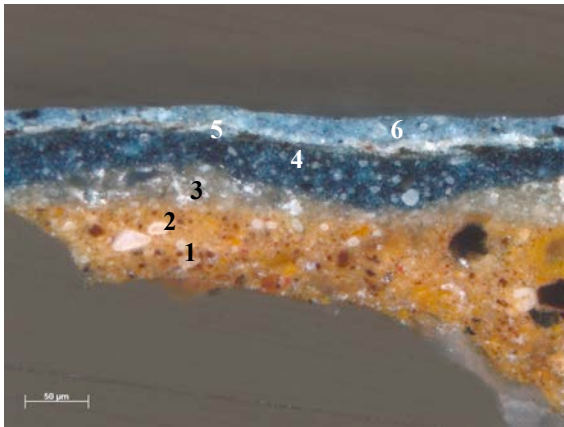


UV 200x

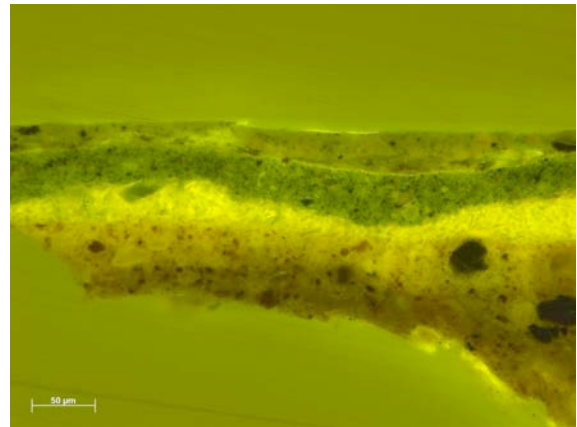
- 4 Thin green layer with fine red pigment.
- 3 Indigo with lead white (and chalk?).
- 2 Light brown ground layer with umber, leadmenie and lead white.
- 1 Dark brown ground layer with umber.

Paint cross-section 1207-19

Blue garment of woman with lance



BF 500x



UV 500X

- 6 Overpaint with Prussian blue.
- 5 Fluorescent layer (varnish).
- 4 Indigo.
- 3 Discoloured smalt.
- 2 Light brown ground layer with umber, leadmenie and lead white.
- 1 Dark brown ground layer with umber.