

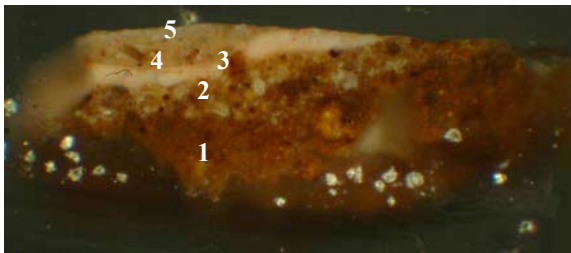
Appendix I Paint samples of *Bacchus and Ariadne*



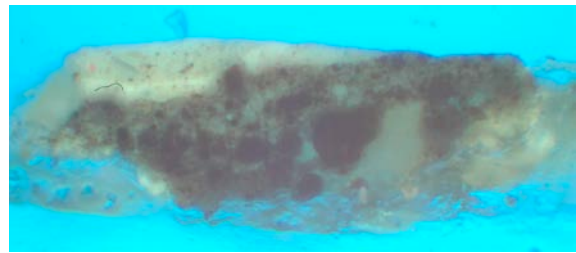
Location of paint sampling

Polypol and easysections; studied with light microscope with magnification 100, 200 and 500; darkfield – (DF), brightfield – (BF) and ultra violette radiation (UV).

Paint cross-section 1 Lower abdomen of Ariadne (26,7 cm → 49 cm ↑)



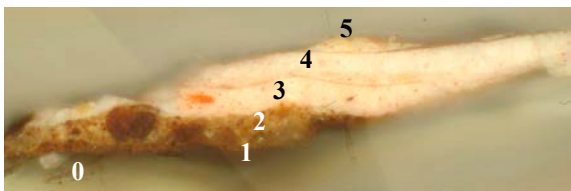
DF 200x



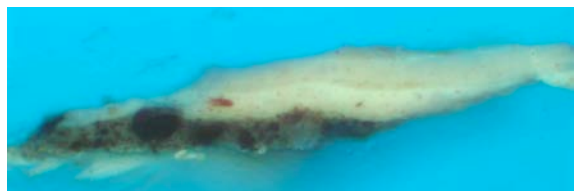
UV 200x

- 5 Thin layer of lead white, chalk and discoloured smalt.
- 4 layer of lead white, chalk, vermilion, red lake, yellow ocher, calcium phosphate, particle of quartz and bone black.
- 3 Two layers of lead white and vermilion with medium layer in between.
- 2 Ground layer with lead white, umber and chalk.
- 1 Ground layer with umber, chalk and red earth pigment.

Paint cross-section 2 Flesh colour of Ariadne, arm, high light (43,3 cm → 111,3 cm ↓)



BF 200x



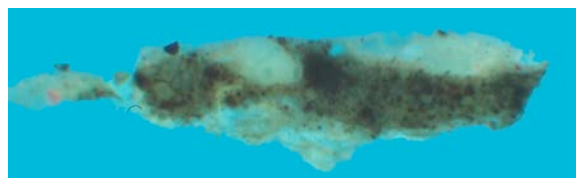
UV 200x

- 5 Light pink layer with lead white and vermilion.
- 4 Light pink layer with lead white and vermilion with on top a medium layer.
- 3 Pink layer with lead white and vermilion with on top a medium layer.
- 2 Ground layer with lead white, umber and chalk.
- 1 Ground layer with umber, chalk and red earth pigment.
- 0 Fluorescent layer (glue).

Paint cross-section 3 Flesh colour of Ariadne, chin, shadow (32,8 cm → 99 cm ↓)



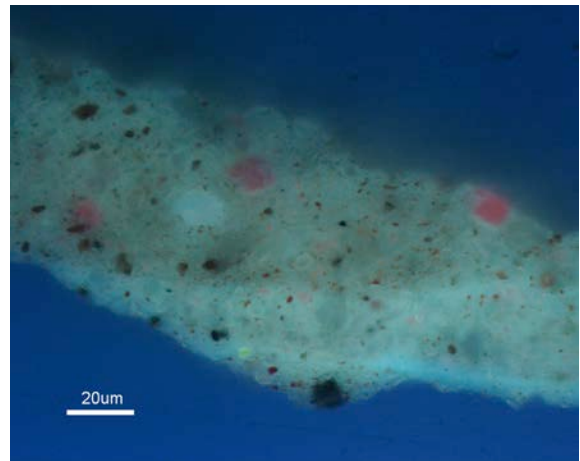
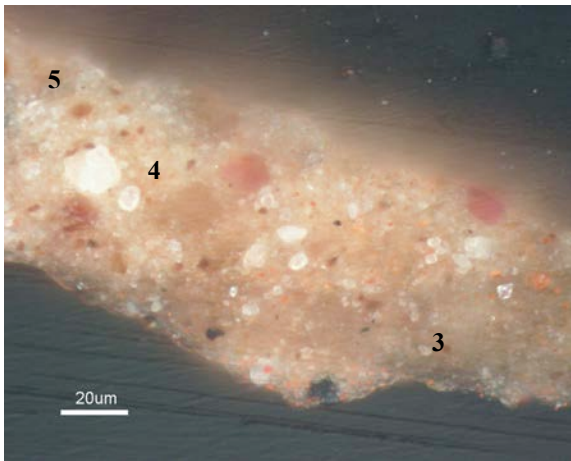
BF 200x



UV 200x

- 4 Grey layer with lead white and vermilion, red lake and black pigment, probably bone black.
- 3 Pink layer with lead white and vermilion.
- 2 Ground layer with lead white, umber and chalk.
- 1 Ground layer with umber, chalk and red earth pigment.

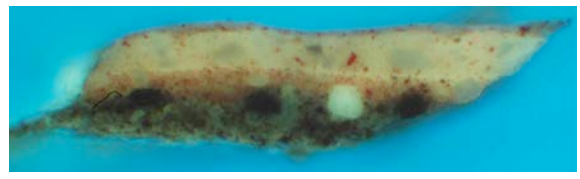
Paint cross-section 4    Flesh colour of Bacchus, arm, shadow (31,5 cm ← 82 cm ↓)



BF 500x      UV 500x

- 5 Very light pink layer with lead white, some red earth pigment and black pigment, probably bone black.
- 4 Light pink layer with red lake on aluminum substrate, chalk and red earth pigment.
- 3 Light brown layer with a red lake, a red earth pigment, chalk and lead white.

Paint cross-section 5    Flesh colour of Bacchus, nostril, red (40,7 cm → 87 cm ↓)

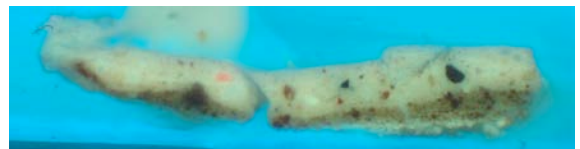


BF 200x

UV 200x

- 5 Thin red layer with little or no lead white and some red pigment.
- 4 Light pink layer with lead white and red earth pigment.
- 3 Red layer with red earth pigment, a red lake and lead white with on top a medium layer.
- 2 Ground layer with lead white, umber and chalk.
- 1 Ground layer with umber, chalk and red earth pigment.

Paint cross-section 6    Flesh colour of Bacchus, chest, high light (45,7 cm → 94,4 cm ↓)

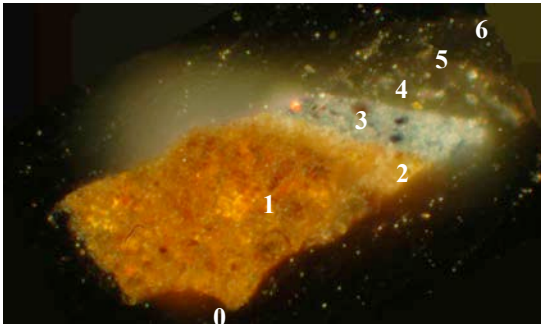


BF 200x

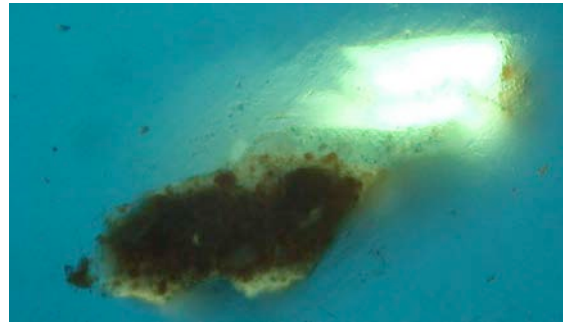
UV 200x

- 4 Layer with probably lead white, a red lake, earth pigment and chalk.
- 3 Layer with lead white, a little red earth pigment and bone black.
- 2 Ground layer with lead white, umber and chalk.
- 1 Ground layer with umber, chalk and red earth pigment.

Paint cross-section 10 Blue, transparent overpaint on arch (34,2 cm → 14,9 cm ↓)



DF 500x



UV 500x

6 Varnish

5 Fluorescent transparent layer with Prussian blue.

4 Fluorescent layer (varnish).

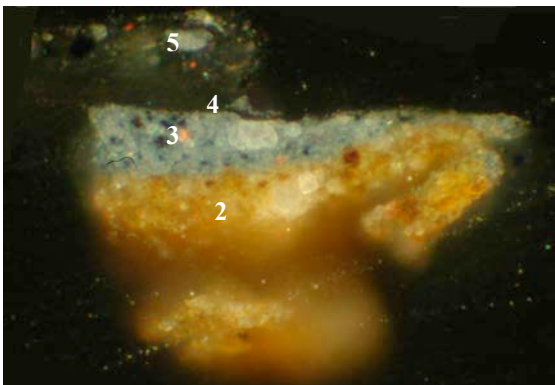
3 Indigo with lead white, some chalk and a particle of vermillion.

2 Ground layer with lead white, umber and chalk.

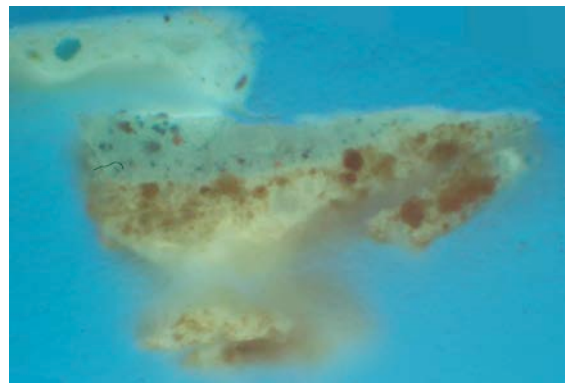
1 Ground layer with umber, chalk and red earth pigment.

0 Fluorescent layer (glue).

Paint cross-section 11 Blue, transparent overpaint on arch, less concentrated (32 cm → 13 cm ↓)



BF 500x



UV 500x

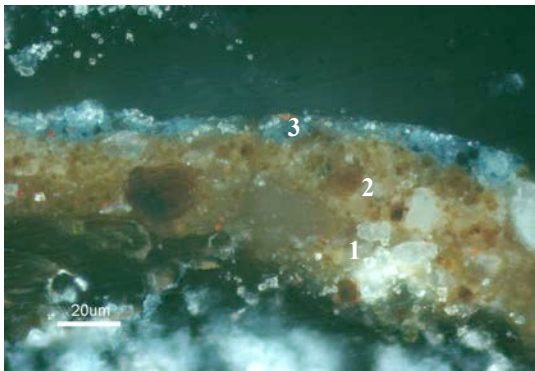
5 Fluorescent transparent layer of Prussian blue.

4 Fluorescent layer (varnish).

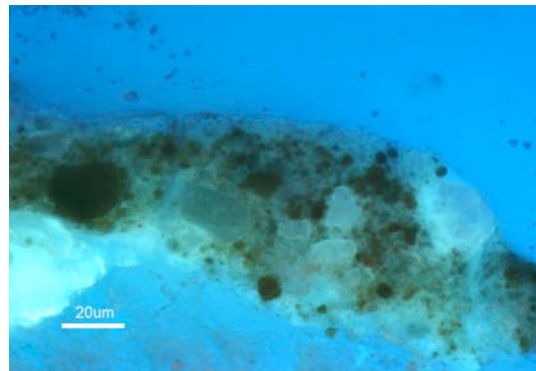
3 Indigo with lead white, some chalk and a particle of vermillion.

2 Ground layer with lead white, umber and chalk.

Paint cross-section 12 Blue sky in the arch, original (37,3 cm → 11 cm ↓)



BF 500x



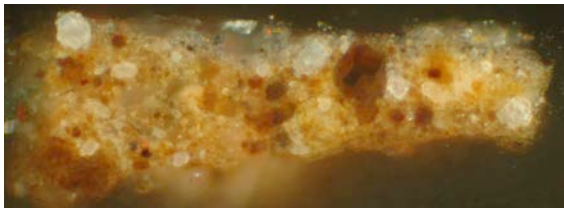
UV 500x

3 Indigo with lead white, some chalk and a particle of vermilion.

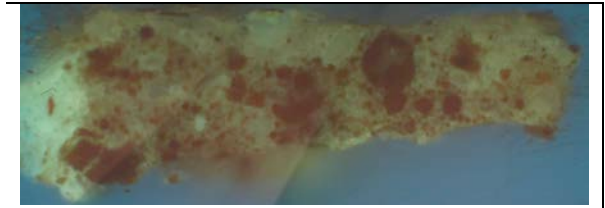
2 Ground layer with lead white, umber and chalk.

1 Ground layer with umber, chalk and red earth pigment.

Paint cross-section 13 Area left from the blue arch (18,2 cm → 5,1 ↓)



BF 500x



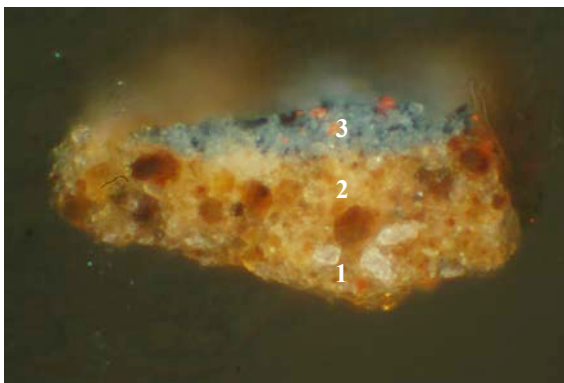
UV 500x

3 Grey layer with white, black, red and blue (indigo?) pigment.

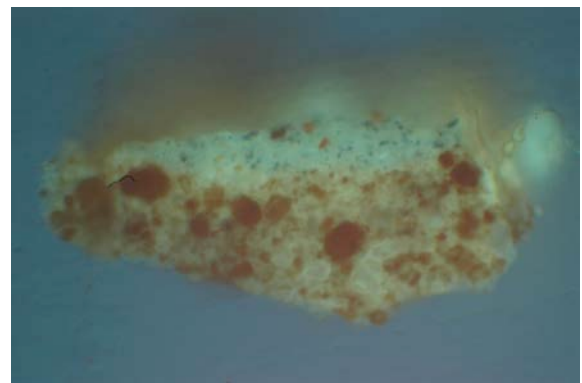
2 Ground layer with lead white, umber and chalk.

1 Ground layer with umber, chalk and red earth pigment.

Paint cross-section 14 Area to the right of indigo, dark sign (32,7 cm ← 6,3 cm ↓)



BF 500x



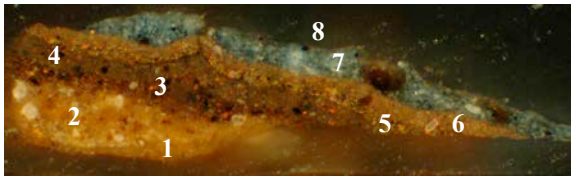
UV 500x

3 Indigo with lead white, some chalk, vermilion and some black pigment.

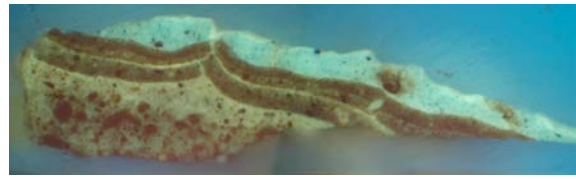
2 Ground layer with lead white, umber and chalk.

1 Ground layer with umber, chalk and red earth pigment.

Paint cross-section 16 Blue garment of maenad to the right of Bacchus (23,5 cm ← 78 cm ↑)



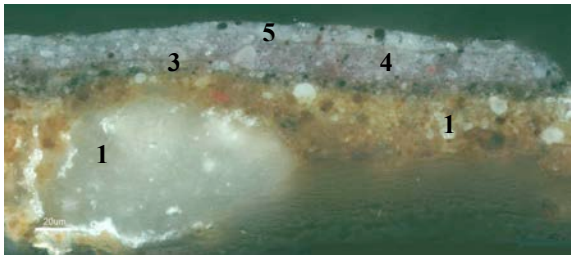
DF 200x



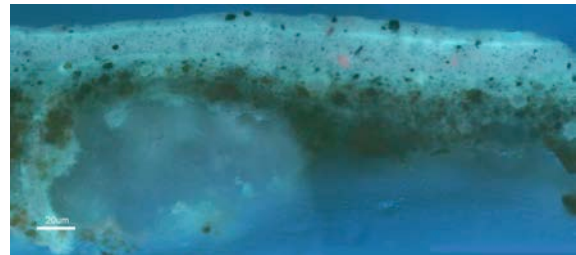
UV 200x

- 8 Residue of varnish.
- 7 Indigo with probably lead white and some chalk.
- 6 Red layer.
- 5 Thin brown red layer.
- 4 Dark brown layer with on top a medium layer.
- 3 Dark red brown layer with on top a medium layer.
- 2 Ground layer with lead white, umber and chalk.
- 1 Ground layer with umber, chalk and red earth pigment.

Paint cross-section 18 Purple garment top left, high light (3 cm → 35 cm ↓)



BF 500x



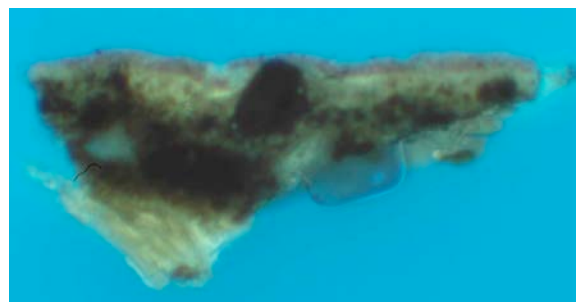
UV 500

- 5 Grey layer with particles of discoloured lake, some bone black and lead white.
- 4 Purple layer with purple and red lake with red ocher and lead white with on top a medium layer.
- 3 Grey layer with bone black and lead white.
- 2 Ground layer with lead white, umber and chalk.
- 1 Ground layer with umber, chalk and red earth pigment.

Paint cross-section 19 Purple garment, dark area (17 cm → 74 cm ↓)



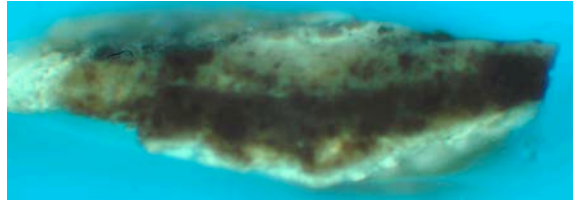
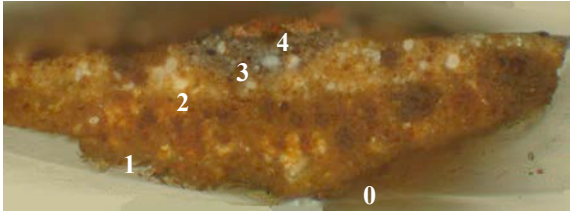
BF 500x



UV 500x

- 4 Layer with a very fine black pigment, probably lamp black, bright red earth pigment, lead white and a red lake.
- 3 Layer with lead white, a red pigment and black with on top a medium layer.
- 2 Ground layer with lead white, umber and chalk.
- 1 Ground layer with umber, chalk and red earth pigment.
- 0 Fluorescent layer (glue).

Paint cross-section 20 Purple cloud top left (12 cm → 27,5 cm ↓)

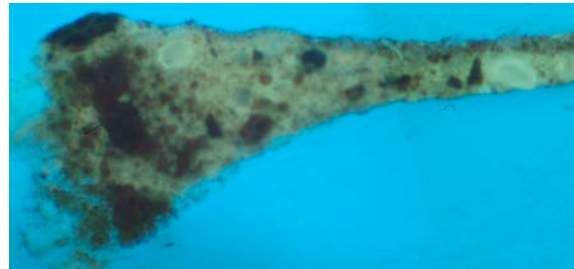
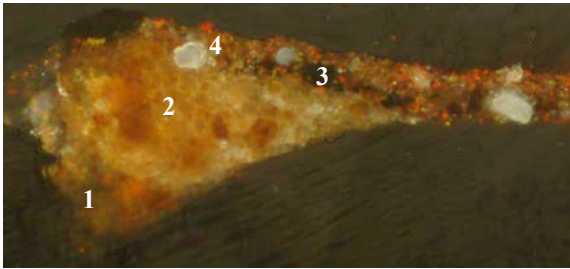


BF 500x

UV 500x

- 4 Red grey layer with red earth pigment, lead white and a brown earth pigment.
- 3 Grey layer with lead white, brown earth pigment and a black pigment, probably bone black.
- 2 Ground layer with lead white, umber and chalk.
- 1 Ground layer with umber, chalk and red earth pigment.
- 0 Fluorescent layer (glue).

Paint cross-section 21 Brown rock top right (32,3 cm ← 25,4 cm ↓)



BF 500x

UV 500x

- 4 Red layer with lead white and a bright red earth pigment.
- 3 Layer with black pigment, fine red pigment and lead white.
- 2 Ground layer with lead white, umber and chalk.
- 1 Ground layer with umber, chalk and red earth pigment.